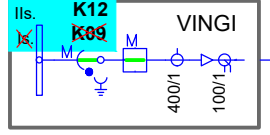
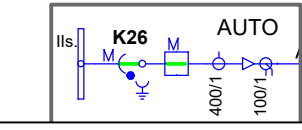


SAVI 110/35/10kV



SAVI 110/35/10kV



AHXAMK-W 3x240 K02100076 + 0,210

AHXAMK-W 3x240 K02100468 + 0,350

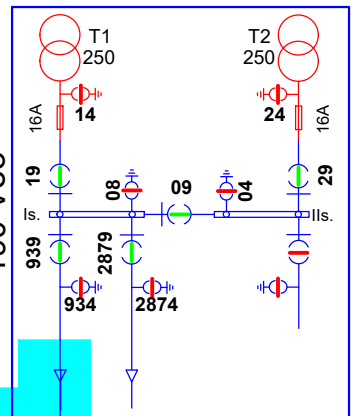
ASHV-10 3x95 K02100076 - 0,370

AHXAMK-W 3x240 K02100076 - 0,065

ASHV-10 3x95 K0210076 - 0,035

AASHV 3x120 K02100076 - 0,110

190 Veo

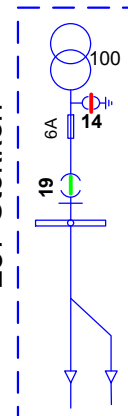


AHXAMK-W 3x240 K021100468-0,175

ASB-10 3x50 0,255

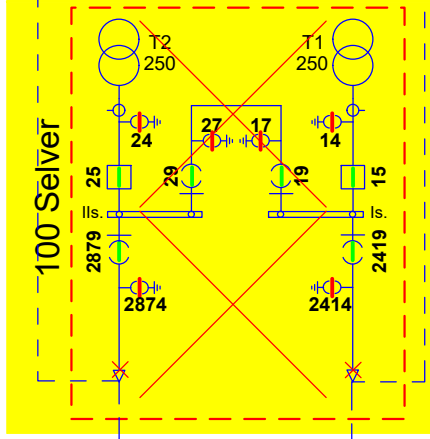
AHXAMK-W 3x120 0,109

287 Stokeri



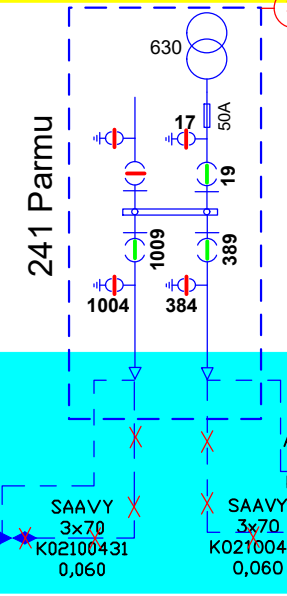
AHXAMK-W 3x120 0,270

100 Selver



AHXAMK-W 3x240 K02100431 0,249

241 Parmu



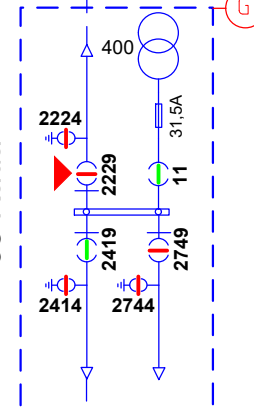
AHXAMK-W 3x240 K02100419 0,060

AHXAMK-W 3x70 K02100419 0,060

AHXAMK-W 3x120 K02100419 0,093

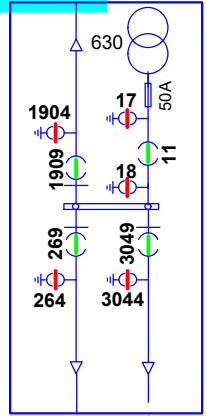
AHXAMK-W 3x240 K02100419 0,052

38 Rauda

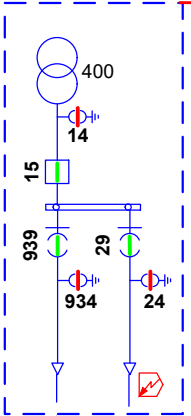


ASB-6 3x50 K02100419 0,095

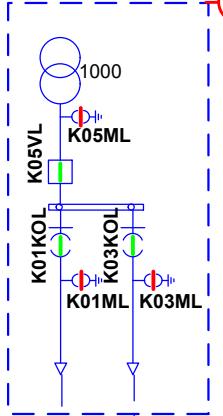
93 Auto



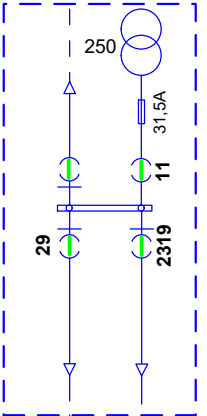
304 Donaldi



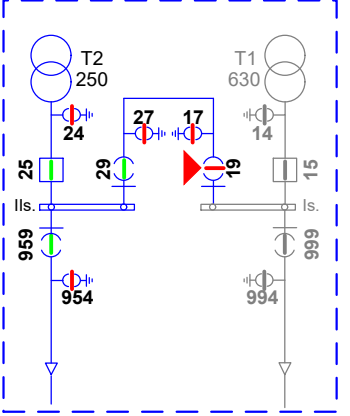
6705



95 Hangu

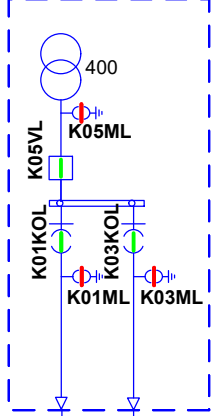


231 Häma



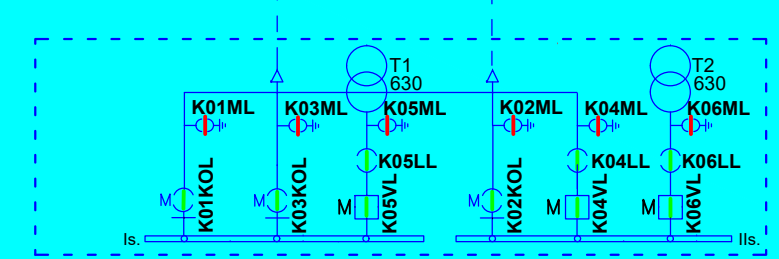
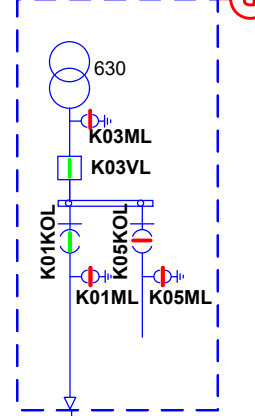
AHXAMK-W 3x240 124137 - 0,35

AJ9020



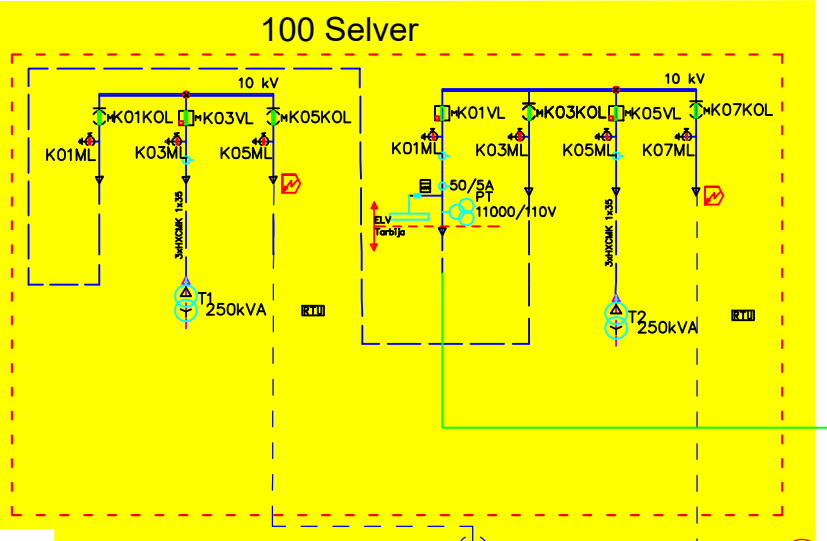
AHXAMK-W 3x240 KPL204625 - 0,585

AJ11633

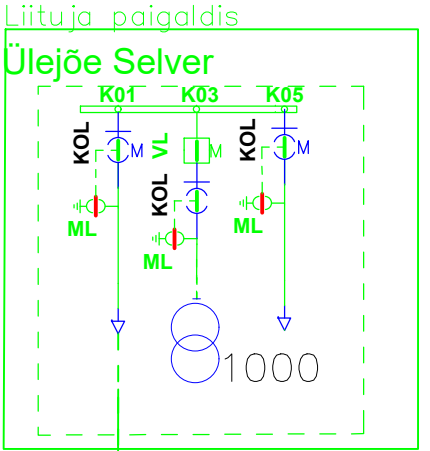
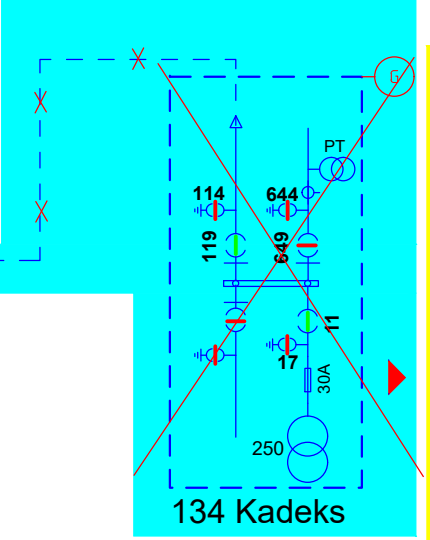


AJ14829

100 Selver



134 Kadeks



Liituja paigaldis

Ülejõe Selver

AHXAMK-W 3x120 L=70m

Leht nr. SAV-K13:
Savi 110/35/10kV - Lao
AJ222 Renet